



~ ONTABA ~

# What is ABA

Applied Behaviour Analysis

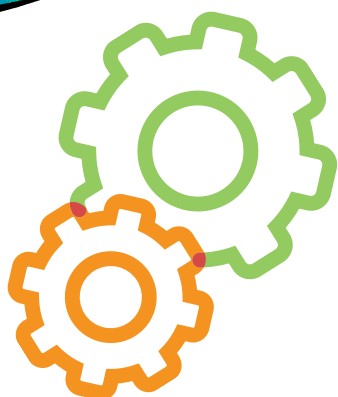


## FOCUS

How can environments be adapted to promote best possible outcomes for individuals, families, & communities

## PURPOSE

Helping people achieve their goals & live their best life possible



## FUNCTIONAL BEHAVIOUR

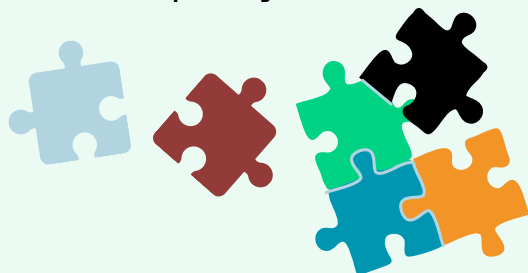
Behaviour does not occur in a vacuum & often the result of a complex relationship with people, places, & things we interact with

Behaviour is neither "good" nor "bad" – it serves a function for getting needs met

## TEACHING

Skills that promote safety & independence

Solve problems that may be negatively impacting a person's quality of life



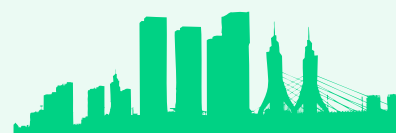
## CLINICAL POPULATIONS WE WORK WITH

- IDD
- behaviour disorders
- ABI
- dementia
- substance use disorder
- feeding & movement disorders
- ASD
- ADHD



## SETTINGS WE WORK IN

- developmental service agencies
- mental health settings
- long-term care facilities
- hospitals & outpatient clinics
- child care centres
- schools
- businesses
- criminal justice system
- pediatric & family medicine clinics
- camps & rec centres
- athletic facilities



## SKILL DEFICITS ADDRESSED WITH ABA

- communication
- social interaction
- play & leisure skills
- activities of daily living
- motor skills
- cognitive skills
- sensory system – reactions to stimuli
- address interfering behaviours



## FOCUSED VS COMPREHENSIVE ABA TREATMENT

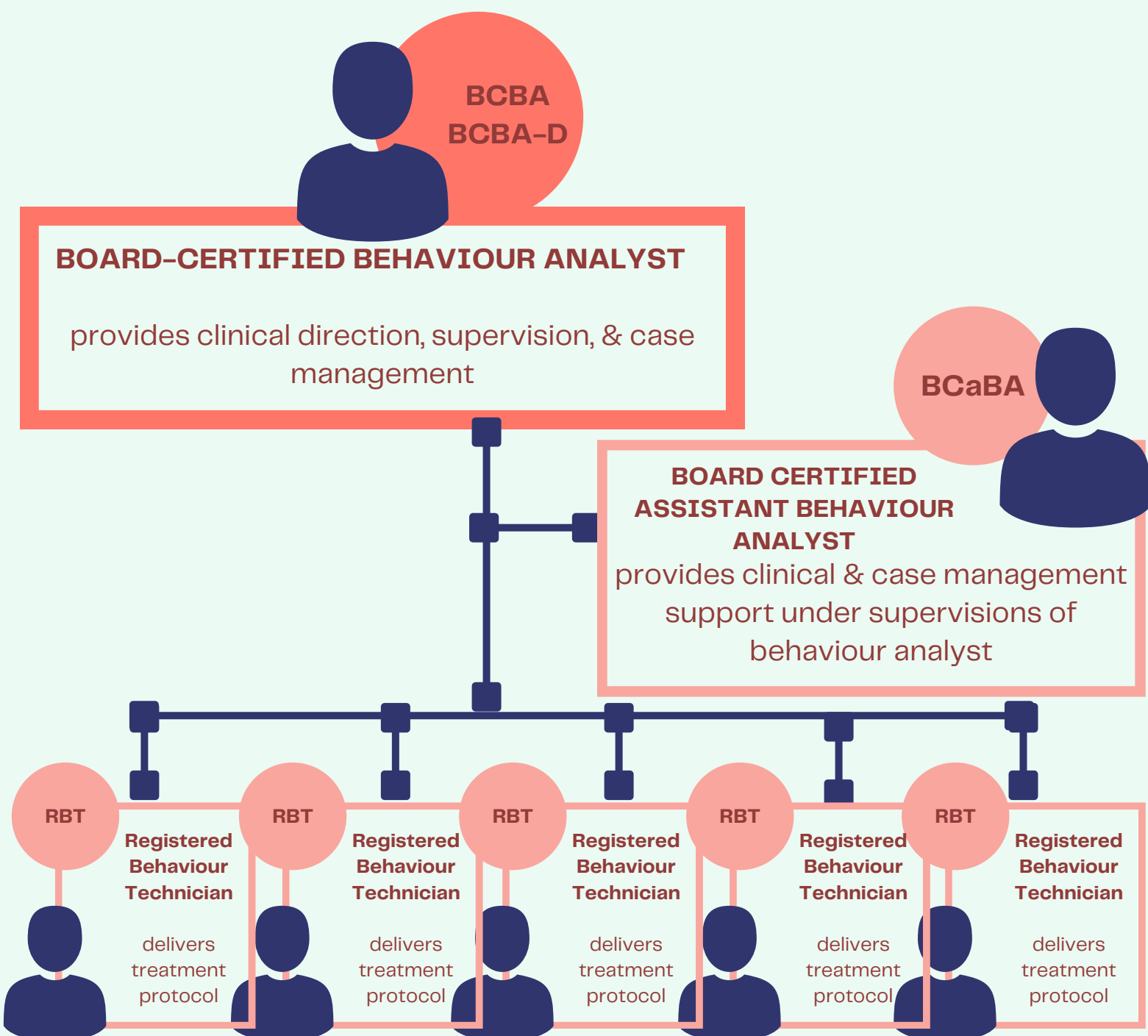
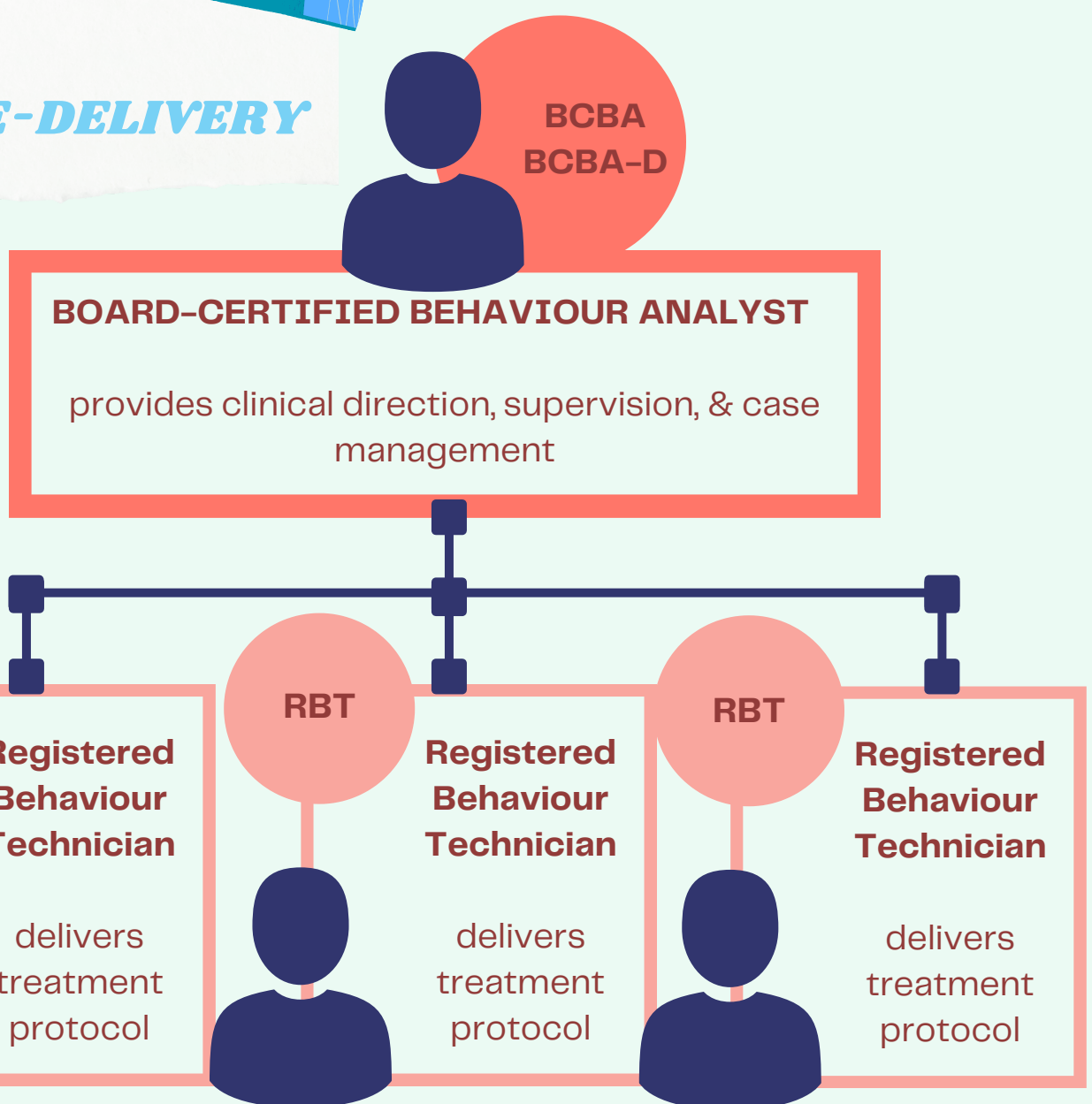
### Focused ABA Treatment

- 10–25 hrs/week direct treatment
- Targeted skill acquisition and behaviour reduction
- Doesn't include direct & indirect supervision & caregiver training
- Severe or risky behaviour may require 25+hrs

### Comprehensive ABA Treatment

- 30–40 hrs/week of 1:1 direct treatment on multiple goals
- Multiple skill acquisition and behaviour reduction goals
- Doesn't include caregiver training, supervision & other services
- Hours reflect an individual's needs, environment and context

## TIERED SERVICE-DELIVERY





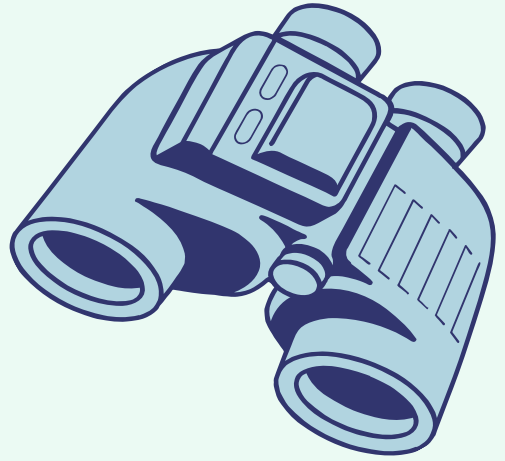
## ***DOSAGE OF CASE SUPERVISION***

2 hours for every 10 hours of direct treatment

It may need to be increased or decreased based on the clients' needs or phase of treatment

Supervision should reflect client's unique needs and the learning context

Supervision hours could be changed to reflect current needs/goals/treatments



## ***ADDITIONAL RESOURCES***

[ONTABA](#)

[Understanding ABA](#)

[ABA Special Interests Groups](#)

[Regulations of ABA](#)

[CASP](#)

[Behaviour Analysis Certification Board](#)

[ABA in schools](#)

[EBP for Challenging Behaviours](#)

[EBP for Caregivers](#)

[ABA Primer](#)

[Ontario Autism Program](#)

[ABA for Families](#)



[ABA FAQ](#)

